

ED12DSS Open Frame Bi-stable Driver

Features

- The ED12DSS is the optimal driver for the UNIBLITZ[®] N-CAS[®] DSS Shutter Series
- Open frame printed circuit card suitable for OEM applications
- Operates DSS series or NS series bi-stable shutters.
- Exposure determined by external pulse (BNC, TTL active high) or switch contact closure (when switching internal +5VDC into shutter input)
- In-line PULSE INPUT BNC active high 5V TTL
- Selectable pulse high current duration for specific DSS/NS series shutters via 4-position piano switch
- Internal fuse protection for SHUTTER OUTPUT
- 203D Shutter interconnect cable included – JST 2-pin to JST 2-pin, 3ft in length
- ED-IOP Input cable harness included for power and trigger signal input:
 - * +5V TTL signal input (BNC)
 - * +5VDC output (to enable driver from external switch contact or transistor switch closure)
 - * Input/output interface cable: 18-inch red/black bare power leads, 6-inch BNC trigger input with reference ground. Both terminate to Tyco/Amp 5-pin polarized connector for connection to ED12DSS.
- Power input to controller via 2-wire input harness

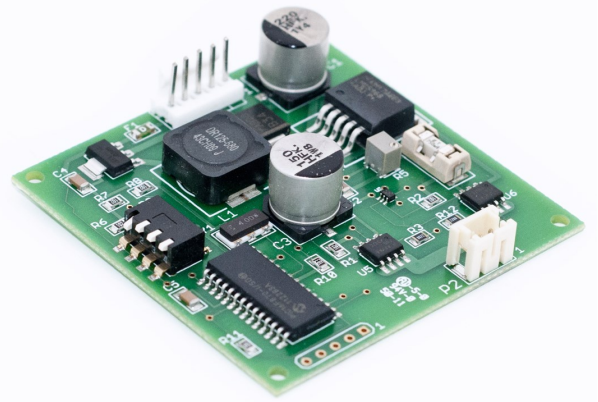
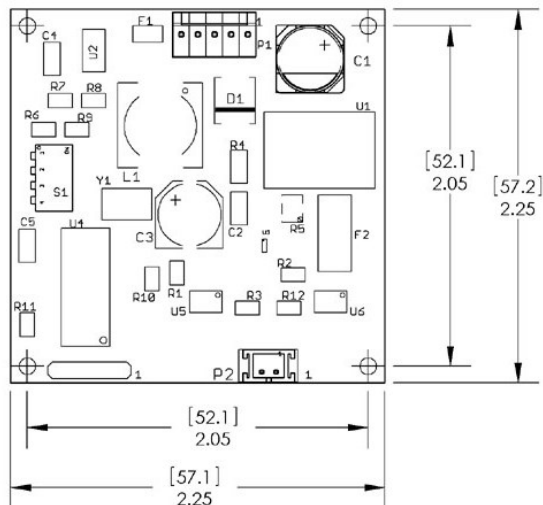


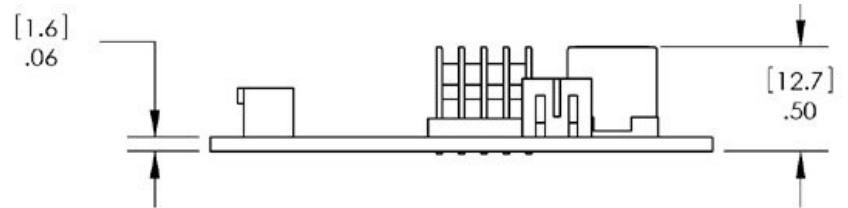
Fig. 1 ED12DSS Bi-stable Driver

Drawings

Top View



Side View



Connections

- P1 Power** – Signal Input / Output
Pin #1 – INPUT: +12 to 24VDC Regulated
Pin #2 – PASSIVE: POWER RETURN
Pin #3 – PASSIVE: SIGNAL RETURN
Pin #4 – INPUT: TRIGGER INPUT (5V TTL – Active High)
Pin #5 – OUTPUT: +5VDC, 0.25A MAX.
P2 Shutter Output
Pin #1 – OUTPUT: SHUTTER (A) Red
Pin #2 – OUTPUT: SHUTTER (B) Black

Compatibility

The ED12DSS is compatible with the following UNIBLITZ[®] shutter devices:

| VS | LS | CS | DSS | TS | NS | XRS |
|----|----|----|-------|------|--------------------|-----|
| | | | DSS10 | TS2B | NS15B ¹ | |
| | | | DSS20 | TS6B | NS25B ¹ | |
| | | | DSS25 | | NS35B ¹ | |
| | | | | | NS45B ¹ | |

Use with shutter devices other than those listed to the left is not recommended. Please contact us for further information.

¹ This device must be equipped with the "ED" option for proper operation with the ED12DSS.

Specifications

- Size (HWD) 0.50 x 2.25 x 2.25 inches (12.7 x 57.2 x 57.2 mm)
- Weight 0.730 oz (0.021 kg)
- Power +12 to 24VDC at 1.5A - user provided.
- RoHS Compliant

For information regarding applicable intellectual property, please visit www.uniblitz.com/patents.

803 Linden Avenue • Rochester, NY 14625 • 585-385-5930 tel • 800-828-6972 toll-free • 585-385-6004 fax • www.uniblitz.com

Due to our ongoing product development program, Vincent Associates reserves the right to discontinue or change specifications or designs at any time, without incurring any obligations. Teflon is a registered trademark of E.I. DuPont. Drawings shown for illustrative purposes only. Updated 06/13. *Specification sheet Ver. 1.1*