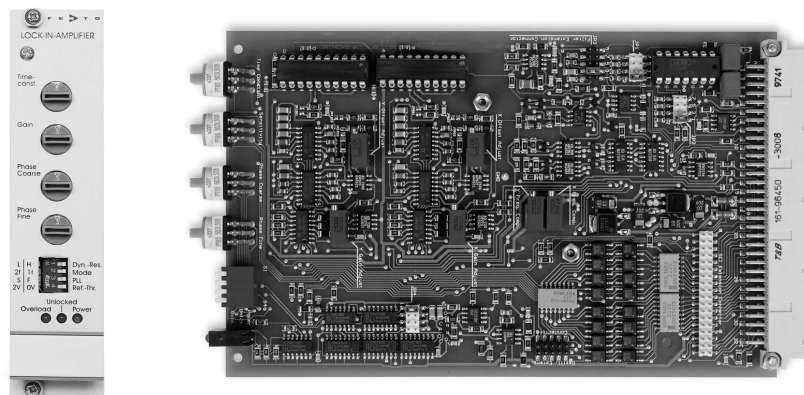


Single-Board Lock-In-Amplifier



Picture shows Lock-in Amplifier card with optional Mounting Kit LIA- MK- 2 (to be ordered separately)

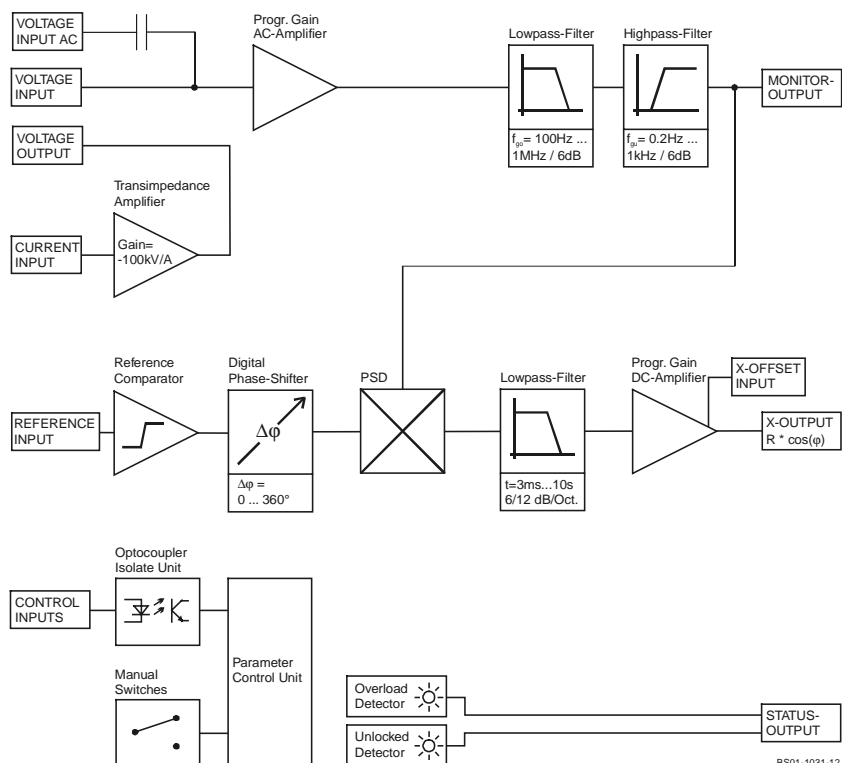
Features

- Single Phase Detection with X Output
- Working Frequency 5 Hz ... 10 kHz
- Digital Phase Shifter 0 ... 360°
- Current and Voltage Input
- Parameter Control by local Switches and opto-isolated digital Inputs
- Optional Mounting Kit and Reference Oscillator Modules available

Applications

- Spectroscopy
- Luminescence, Fluorescence, Phosphorescence Measurements
- Light Scattering Measurements
- Opto-electronical Quality Control
- Integration in Industrial and Scientific Measurement-Systems
- Multi-Channel-Systems at moderate Costs

Block Diagram



BS01-1031-12

Single-Board Lock-In-Amplifier

Specifications	Test Conditions	Vs = ± 15 V, Ta = 25°C
Voltage Input	Voltage Input Characteristic	True Differential Instrumentation-Amplifier
	Voltage Input Range	3 μV ... 1V in 1-3-10 steps (for Full Scale Output)
	Voltage Input Coupling	AC or DC (selectable at Connector)
	Voltage Input Impedance	1 MΩ // 4 pF
	Voltage Input Noise	12 nV/√Hz
	Voltage Input CMRR	110 dB @ 1 kHz, 100 dB @ 10 kHz
	Voltage Input Gain Drift	100 ppm/K
Current Input	Current Input Characteristic	Transimpedance-Amplifier, -100 kV/A (inverting)
	Current Input Range	30 pA ... 10 μA in 1-3-10 steps (for Full Scale Output)
	Current Input Noise	0.4 pA/√Hz
	Current Input Source- Capacit.	10 pF – 500 pF (recommended)
	Current Input Gain Error vs. Source Capacitance	Cs f < 10 kHz
		10 pF < 1 %
		100 pF < 1 % 1 nF < 2 %
Signal Filter	Signal Filter Lowpass (-3 dB BW)	1 MHz, 100 kHz, 10 kHz, 1 kHz, 100 Hz; 6 dB/Oct. selectable per jumper
	Signal Filter Highpass (-3 dB BW)	0.2 Hz, 1 Hz, 10 Hz, 100 Hz, 1 kHz; 6 dB/Oct. selectable per jumper
	Signal Filter Cutoff accuracy	± 20 %
	Max. Dynamic Reserve	80 dB
Signal Monitor Output	Signal Monitor Output Gain	1 ... 3333 (depends on Gain-Setting)
	Signal Monitor Output Voltage	± 8 V max.
	Signal Monitor Output Impedance	100 Ω
	Signal Monitor Output Current	± 10 mA max.
	Note	When using Current Input with low Input Ranges, the Monitor Output may be disabled by opening the soldering jumper at the Board (near JP1) to prevent from recoupling.
Demodulator	Demodulator Dynamic Reserve	15 dB @ Ultra Stable Setting 35 dB @ Low Drift Setting 55 dB @ High Dynamic Setting
Reference Input	Reference Input Voltage Range	± 100 mV ... ± 5 V @ bip. Mode (0 V Comparator Threshold) - 5 V / +10 V @ TTL Mode (+2 V Comparator Threshold)
	Reference Input Impedance	1 MΩ
	Reference Acquisition Time	max. 2 s @ Fast Setting max. 4 s @ Slow Setting
Phase Shifter	Phase Shifter Type	Digital, Working Frequency 5 Hz ... 10 kHz
	Phase Shifter Range	0 ... + 360 °
	Phase Shifter Resolution	1.4 °
	Phase Shifter Drift	< 100 ppm/K
	Phase Shifter Accuracy	< 0.3 °
Time Constants	Time Constant Range	3 ms ... 10 s in 1-3-10 steps
	Time Const. Filter Characteristic	6 dB/Oct. or 12 dB/Oct. switchable

Single-Board Lock-In-Amplifier

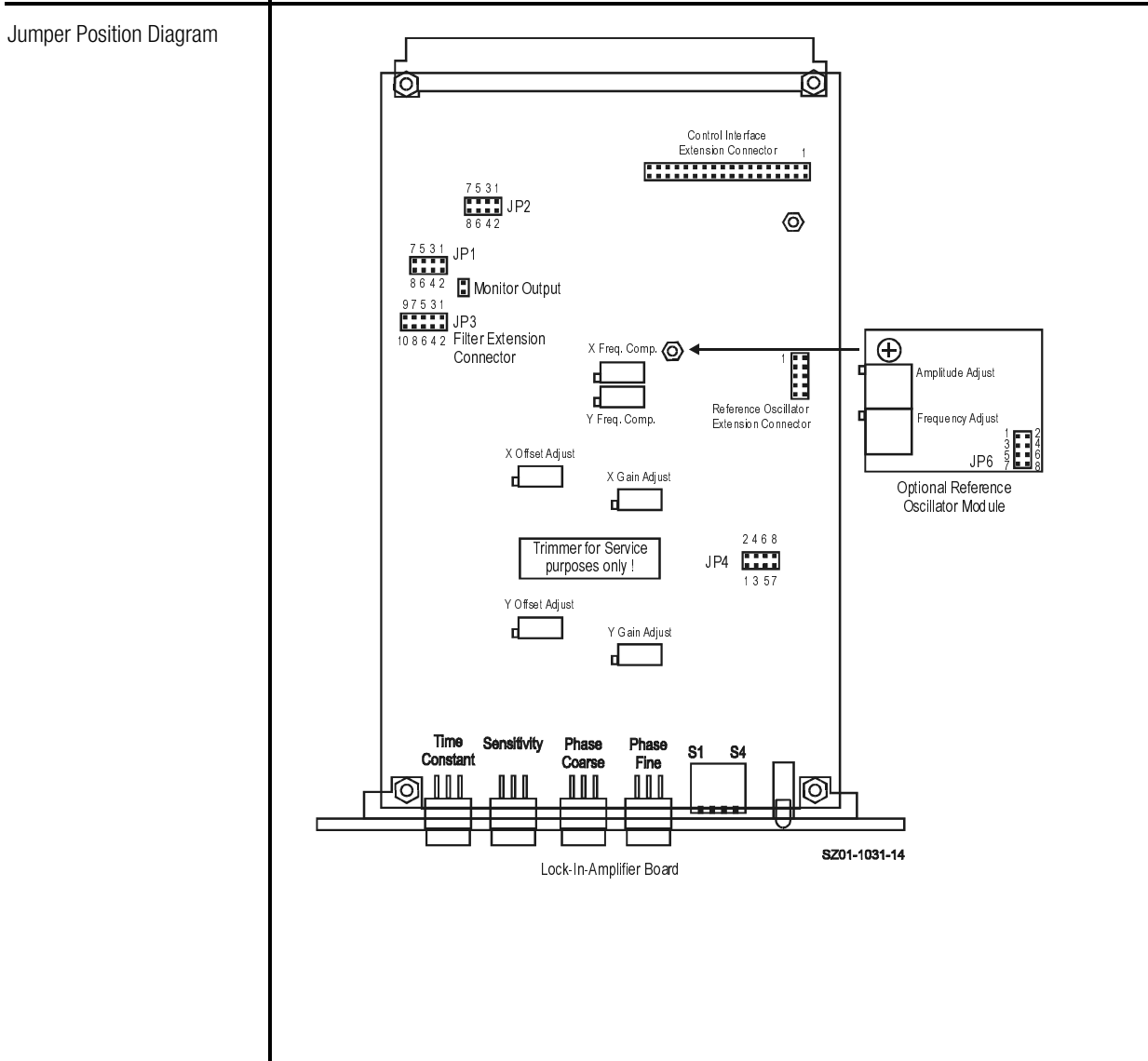
Specifications (continued) Output	<table style="width: 100%; border-collapse: collapse;"> <tr> <td style="width: 50%;">Output Channels</td> <td>X = In Phase</td> </tr> <tr> <td>Output Voltage Range</td> <td>± 10 V (@ 2 kΩ Load)</td> </tr> <tr> <td>Output Current</td> <td>± 5 mA max.</td> </tr> <tr> <td>Output Impedance</td> <td>50 Ω</td> </tr> <tr> <td>Output DC-Stability</td> <td>5 ppm/K @ Ultra Stable Setting 50 ppm/K @ Low Drift Setting 500 ppm/K @ High Dynamic Setting</td> </tr> <tr> <td>Output Basic Accuracy</td> <td>2 % @ sinusoidal input signal</td> </tr> <tr> <td>Output Voltage Offset Range</td> <td>± 100 % Full Scale by ± 10 V Control Voltage</td> </tr> <tr> <td>Output Voltage Offset Control-Voltage Impedance</td> <td>> 2 kΩ</td> </tr> </table>	Output Channels	X = In Phase	Output Voltage Range	± 10 V (@ 2 kΩ Load)	Output Current	± 5 mA max.	Output Impedance	50 Ω	Output DC-Stability	5 ppm/K @ Ultra Stable Setting 50 ppm/K @ Low Drift Setting 500 ppm/K @ High Dynamic Setting	Output Basic Accuracy	2 % @ sinusoidal input signal	Output Voltage Offset Range	± 100 % Full Scale by ± 10 V Control Voltage	Output Voltage Offset Control-Voltage Impedance	> 2 kΩ																								
Output Channels	X = In Phase																																								
Output Voltage Range	± 10 V (@ 2 kΩ Load)																																								
Output Current	± 5 mA max.																																								
Output Impedance	50 Ω																																								
Output DC-Stability	5 ppm/K @ Ultra Stable Setting 50 ppm/K @ Low Drift Setting 500 ppm/K @ High Dynamic Setting																																								
Output Basic Accuracy	2 % @ sinusoidal input signal																																								
Output Voltage Offset Range	± 100 % Full Scale by ± 10 V Control Voltage																																								
Output Voltage Offset Control-Voltage Impedance	> 2 kΩ																																								
Status Indicator LED	Functions Amplifier Overload Status Reference PLL Unlocked Status																																								
Digital Control	Control Input Voltage Control Input Current Digital Status Output Voltage Digital Status Output Current	Low: - 0.8 V ... + 0.8 V, High: + 1.8 V ... + 12 V 0 mA @ 0V, 1.5 mA @ + 5 V, 4.5 mA @ + 12V typ. Active: + 4.5 V typ., Non Active: 0 V typ. 10 mA max.																																							
Power Supply	Supply Voltage Supply Current	± 15 Vdc ... ± 18 Vdc - 60 mA, + 100 mA																																							
Case	Board Weight	19" Euro-Card, (100 mm x 160 mm Board) 100 gr. (0.22 lbs)																																							
Temperature Range	Storage Temperature Operating Temperature	- 40 ... + 100 °C 0 ... + 60 °C																																							
Absolute Maximum Ratings	Signal Input AC Voltage Signal Input DC Voltage Reference Input Voltage Control Input Voltage Power Supply Voltage	50 Vpp ± 70 V ± 15 V - 5 V, + 15 V ± 22 V																																							
Switch Settings	<table style="width: 100%; border-collapse: collapse;"> <tr> <td style="width: 30%;">4 Dip Switch - Presettings</td> <td style="width: 35%;">Switch OFF</td> <td style="width: 35%;">ON</td> </tr> <tr> <td></td> <td style="border-top: 1px solid black;">S1</td> <td style="border-top: 1px solid black;">Low Drift & High Dynamic Ultra Stable & Low Drift</td> </tr> <tr> <td></td> <td>S2</td> <td>1-f Mode 2-f Mode</td> </tr> <tr> <td></td> <td>S3</td> <td>Fast PLL-Locking Slow PLL-Locking</td> </tr> <tr> <td></td> <td>S4</td> <td>Reference-Input-Threshold = 0 V Reference-Input-Threshold = +2 V</td> </tr> </table> <table style="width: 100%; border-collapse: collapse;"> <tr> <td style="width: 30%;">Sensitivity Setting, Output DC-Gain Modes</td> <td colspan="3">3 Output DC-Gain Modes are selectable:</td> </tr> <tr> <td></td> <td style="border-top: 1px solid black;">Mode</td> <td style="border-top: 1px solid black;">DC-Gain</td> <td style="border-top: 1px solid black;">Dyn. Reserve</td> <td style="border-top: 1px solid black;">DC-Stability</td> </tr> <tr> <td></td> <td>Ultra Stable</td> <td>10</td> <td>Low</td> <td>High</td> </tr> <tr> <td></td> <td>Low Drift</td> <td>100</td> <td>Medium</td> <td>Medium</td> </tr> <tr> <td></td> <td>High Dynamic</td> <td>1000</td> <td>High</td> <td>Low</td> </tr> </table> <p style="font-size: small; margin-top: 10px;">If only low dynamic reserve is required, select the higher DC-Stability settings. Use Dip switch S1 to preselect either the two upper or the two lower DC-Gain modes, then select best mode by Sensitivity switch settings 0–7 or 8–F.</p>		4 Dip Switch - Presettings	Switch OFF	ON		S1	Low Drift & High Dynamic Ultra Stable & Low Drift		S2	1-f Mode 2-f Mode		S3	Fast PLL-Locking Slow PLL-Locking		S4	Reference-Input-Threshold = 0 V Reference-Input-Threshold = +2 V	Sensitivity Setting, Output DC-Gain Modes	3 Output DC-Gain Modes are selectable:				Mode	DC-Gain	Dyn. Reserve	DC-Stability		Ultra Stable	10	Low	High		Low Drift	100	Medium	Medium		High Dynamic	1000	High	Low
4 Dip Switch - Presettings	Switch OFF	ON																																							
	S1	Low Drift & High Dynamic Ultra Stable & Low Drift																																							
	S2	1-f Mode 2-f Mode																																							
	S3	Fast PLL-Locking Slow PLL-Locking																																							
	S4	Reference-Input-Threshold = 0 V Reference-Input-Threshold = +2 V																																							
Sensitivity Setting, Output DC-Gain Modes	3 Output DC-Gain Modes are selectable:																																								
	Mode	DC-Gain	Dyn. Reserve	DC-Stability																																					
	Ultra Stable	10	Low	High																																					
	Low Drift	100	Medium	Medium																																					
	High Dynamic	1000	High	Low																																					

Single-Board Lock-In-Amplifier

Switch Settings (continued)	S1 = ON: Sensitivity Setting for Full Scale (= 10 V Output)	<table border="1"> <thead> <tr> <th colspan="3">Ultra Stable Mode</th> <th colspan="3">Low Drift Mode</th> </tr> <tr> <th>Setting</th> <th>Voltage</th> <th>Current</th> <th>Setting</th> <th>Voltage</th> <th>Current</th> </tr> </thead> <tbody> <tr><td>0</td><td>1 V</td><td>10 μA</td><td>8</td><td>100 mV</td><td>1 μA</td></tr> <tr><td>1</td><td>300 mV</td><td>3 μA</td><td>9</td><td>30 mV</td><td>300 nA</td></tr> <tr><td>2</td><td>100 mV</td><td>1 μA</td><td>A</td><td>10 mV</td><td>100 nA</td></tr> <tr><td>3</td><td>30 mV</td><td>300 nA</td><td>B</td><td>3 mV</td><td>30 nA</td></tr> <tr><td>4</td><td>10 mV</td><td>100 nA</td><td>C</td><td>1 mV</td><td>10 nA</td></tr> <tr><td>5</td><td>3 mV</td><td>30 nA</td><td>D</td><td>300 μV</td><td>3 nA</td></tr> <tr><td>6</td><td>1 mV</td><td>10 nA</td><td>E</td><td>100 μV</td><td>1 nA</td></tr> <tr><td>7</td><td>300 μV</td><td>3 nA</td><td>F</td><td>30 μV</td><td>300 pA</td></tr> </tbody> </table>	Ultra Stable Mode			Low Drift Mode			Setting	Voltage	Current	Setting	Voltage	Current	0	1 V	10 μ A	8	100 mV	1 μ A	1	300 mV	3 μ A	9	30 mV	300 nA	2	100 mV	1 μ A	A	10 mV	100 nA	3	30 mV	300 nA	B	3 mV	30 nA	4	10 mV	100 nA	C	1 mV	10 nA	5	3 mV	30 nA	D	300 μ V	3 nA	6	1 mV	10 nA	E	100 μ V	1 nA	7	300 μ V	3 nA	F	30 μ V	300 pA
	Ultra Stable Mode			Low Drift Mode																																																										
	Setting	Voltage	Current	Setting	Voltage	Current																																																								
	0	1 V	10 μ A	8	100 mV	1 μ A																																																								
1	300 mV	3 μ A	9	30 mV	300 nA																																																									
2	100 mV	1 μ A	A	10 mV	100 nA																																																									
3	30 mV	300 nA	B	3 mV	30 nA																																																									
4	10 mV	100 nA	C	1 mV	10 nA																																																									
5	3 mV	30 nA	D	300 μ V	3 nA																																																									
6	1 mV	10 nA	E	100 μ V	1 nA																																																									
7	300 μ V	3 nA	F	30 μ V	300 pA																																																									
S1 = OFF: Sensitivity Setting for Full Scale (= 10 V Output)	<table border="1"> <thead> <tr> <th colspan="3">Low Drift Mode</th> <th colspan="3">High Dynamic Mode</th> </tr> <tr> <th>Setting</th> <th>Voltage</th> <th>Current</th> <th>Setting</th> <th>Voltage</th> <th>Current</th> </tr> </thead> <tbody> <tr><td>0</td><td>100 mV</td><td>1 μA</td><td>8</td><td>10 mV</td><td>100 nA</td></tr> <tr><td>1</td><td>30 mV</td><td>300 nA</td><td>9</td><td>3 mV</td><td>30 nA</td></tr> <tr><td>2</td><td>10 mV</td><td>100 nA</td><td>A</td><td>1 mV</td><td>10 nA</td></tr> <tr><td>3</td><td>3 mV</td><td>30 nA</td><td>B</td><td>300 μV</td><td>3 nA</td></tr> <tr><td>4</td><td>1 mV</td><td>10 nA</td><td>C</td><td>100 μV</td><td>1 nA</td></tr> <tr><td>5</td><td>300 μV</td><td>3 nA</td><td>D</td><td>30 μV</td><td>300 pA</td></tr> <tr><td>6</td><td>100 μV</td><td>1 nA</td><td>E</td><td>10 μV</td><td>100 pA</td></tr> <tr><td>7</td><td>30 μV</td><td>300 pA</td><td>F</td><td>3 μV</td><td>30 pA</td></tr> </tbody> </table>	Low Drift Mode			High Dynamic Mode			Setting	Voltage	Current	Setting	Voltage	Current	0	100 mV	1 μ A	8	10 mV	100 nA	1	30 mV	300 nA	9	3 mV	30 nA	2	10 mV	100 nA	A	1 mV	10 nA	3	3 mV	30 nA	B	300 μ V	3 nA	4	1 mV	10 nA	C	100 μ V	1 nA	5	300 μ V	3 nA	D	30 μ V	300 pA	6	100 μ V	1 nA	E	10 μ V	100 pA	7	30 μ V	300 pA	F	3 μ V	30 pA	
Low Drift Mode			High Dynamic Mode																																																											
Setting	Voltage	Current	Setting	Voltage	Current																																																									
0	100 mV	1 μ A	8	10 mV	100 nA																																																									
1	30 mV	300 nA	9	3 mV	30 nA																																																									
2	10 mV	100 nA	A	1 mV	10 nA																																																									
3	3 mV	30 nA	B	300 μ V	3 nA																																																									
4	1 mV	10 nA	C	100 μ V	1 nA																																																									
5	300 μ V	3 nA	D	30 μ V	300 pA																																																									
6	100 μ V	1 nA	E	10 μ V	100 pA																																																									
7	30 μ V	300 pA	F	3 μ V	30 pA																																																									
Time Constant Setting	<table border="1"> <thead> <tr> <th>6 dB/Oct.</th> <th>12 dB/Oct.</th> <th>Time Constant</th> </tr> </thead> <tbody> <tr><td>0</td><td>8</td><td>3 ms</td></tr> <tr><td>1</td><td>9</td><td>10 ms</td></tr> <tr><td>2</td><td>A</td><td>30 ms</td></tr> <tr><td>3</td><td>B</td><td>100 ms</td></tr> <tr><td>4</td><td>C</td><td>300 ms</td></tr> <tr><td>5</td><td>D</td><td>1 s</td></tr> <tr><td>6</td><td>E</td><td>3 s</td></tr> <tr><td>7</td><td>F</td><td>10 s</td></tr> </tbody> </table>	6 dB/Oct.	12 dB/Oct.	Time Constant	0	8	3 ms	1	9	10 ms	2	A	30 ms	3	B	100 ms	4	C	300 ms	5	D	1 s	6	E	3 s	7	F	10 s																																		
6 dB/Oct.	12 dB/Oct.	Time Constant																																																												
0	8	3 ms																																																												
1	9	10 ms																																																												
2	A	30 ms																																																												
3	B	100 ms																																																												
4	C	300 ms																																																												
5	D	1 s																																																												
6	E	3 s																																																												
7	F	10 s																																																												
Phase Shift Setting	<p>Phase shift is adjusted by 2 phase switches with 8 Bit resolution. Values 0 ... 255 (Hex 00 ... FF) correspond to phase shift setting 0 ... +360 °.</p> <p>One step with switch marked "Coarse" changes phase shift by 22.5 °. The "Fine"-switch changes phase shift by 1.4 ° - steps:</p> <div style="display: flex; justify-content: space-around; align-items: center;"> <div style="text-align: center;"> <p>Coarse</p> </div> <div style="text-align: center;"> <p>Fine</p> </div> </div> <p>If 2-f Mode is selected, the resolution of digital phase control changes to 2.8 ° and the phase shift range doubles to 0 ... + 720 °.</p>																																																													

Single-Board Lock-In-Amplifier

Jumper Settings	Input Signal Filter Setting	Set Cut-Off Frequency of Input Lowpass Filter with JP1 + JP2 (always same position) and Highpass Filter with JP3:	
		Highpass -3 dB Cut-Off	Lowpass -3 dB Cut-Off
	JP3		JP1, JP2
	3 – 4	0.2 Hz	1 – 2 100 Hz
	1 – 3	1 Hz	3 – 4 1 kHz
	2 – 4	10 Hz	5 – 6 10 kHz
	3 – 5	100 Hz	7 – 8 100 kHz
	4 – 6	1 kHz	none 1 MHz
	Frequency Range Selection	JP4	Frequency Range
		1 – 2	normal operation
		3, 4, 5, 6, 7, 8	test pins, do not use



Single-Board Lock-In-Amplifier

Connector	Connector Type	Euro-Card DIN 41612 Connector, 64 pin male, (a+c)	
	Input	Pin C2:	Voltage Input, Non Inverting, DC-Coupled
		Pin C3:	Voltage Input, Non Inverting, AC-Coupled
		Pin C4:	Voltage Input, Inverting, AC-Coupled
		Pin C5:	Voltage Input, Inverting, DC-Coupled
		Pin C7:	Current Input
		Pin C6:	Current Amplifier Voltage Output
		Pin A2- A6:	Input GND
	Monitor Output	Pin C9:	Monitor Output
		Pin A9:	Monitor GND
	Output	Pin C14:	X-Signal Output
		Pin C15:	Output GND
	Offset Input	Pin A10:	X-Offset Input
		Pin A13:	Offset GND
	Status Output	Pin C10:	Unlocked Status Output
		Pin C11:	Overload Status Output
		Pin C17:	Status Output GND (=Power Supply GND)
	Power Supply	Pin A16+C16:	Power Supply – 15V
		Pin A18+C18:	Power Supply + 15V
		Pin A17+C17:	Power Supply GND
	Remote Control Inputs (Opto-Isolated)	Pin C19:	Time Constant (TC0)
		Pin A19:	Time Constant (TC1)
		Pin C20:	Time Constant (TC2)
		Pin A20:	Time Constant Slope (TCSL)
		Pin A22:	Sensitivity (SEN0)
		Pin C21:	Sensitivity (SEN1)
		Pin A21:	Sensitivity (SEN2)
		Pin C22:	Dynamic Mode (DYN0)
		Pin A28:	Phase Shift (PH0)
		Pin C28:	Phase Shift (PH1)
		Pin A27:	Phase Shift (PH2)
		Pin C27:	Phase Shift (PH3)
		Pin A26:	Phase Shift (PH4)
		Pin C26:	Phase Shift (PH5)
		Pin A25:	Phase Shift (PH6)
		Pin C25:	Phase Shift (PH7)
		Pin C24:	Disable Local Switch Control
		Pin A23+A24:	Remote Control GND (Common Optocoupler Cathode)
	Reference Input	Pin A32:	Reference Input
		Pin A31:	Reference Input Ground
	Reference Output (Connected only if optional Oscillator Module is installed)	Pin A30:	Reference Output
		Pin A17:	Refer. Output GND (=Power Supply GND)
		Pin A29:	Reference Synchronization Input
	Standard Control Interface (Connected only if optional Control Interface Module (future product) is installed)	Pin C29:	Interface 0
		Pin C30:	Interface 1
		Pin C31:	Interface 2
		Pin C32:	Interface 3

Single-Board Lock-In-Amplifier

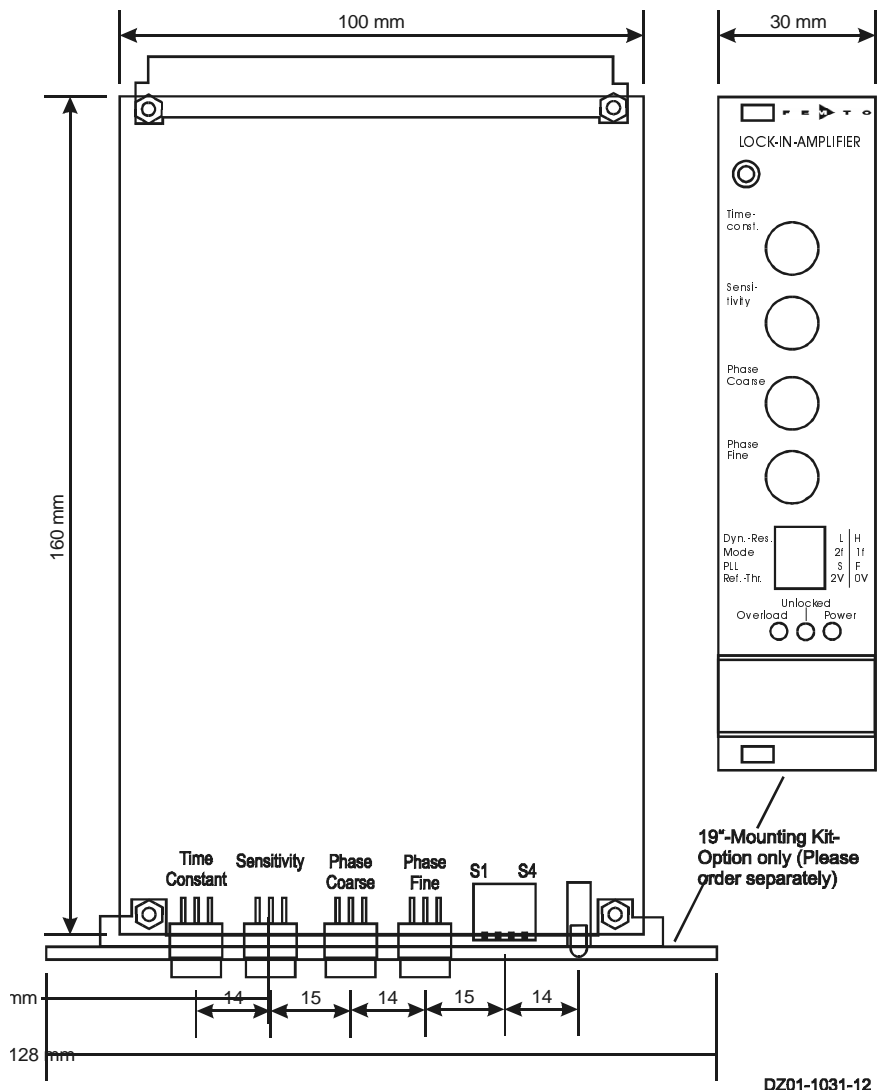
<p>Remote Control Operation</p>	<p>General</p> <p>Remote Control Input Bits are opto-isolated and connected by logical OR to local switch setting. The 4 hexadecimal switches are 4 Bit-coded as shown in the following table:</p> <table border="1"> <thead> <tr> <th>Switch Code</th> <th>MSB Bit 3</th> <th>Bit 2</th> <th>Bit 1</th> <th>LSB Bit 0</th> </tr> </thead> <tbody> <tr><td>0</td><td>Low</td><td>Low</td><td>Low</td><td>Low</td></tr> <tr><td>1</td><td>Low</td><td>Low</td><td>Low</td><td>High</td></tr> <tr><td>2</td><td>Low</td><td>Low</td><td>High</td><td>Low</td></tr> <tr><td>3</td><td>Low</td><td>Low</td><td>High</td><td>High</td></tr> <tr><td>4</td><td>Low</td><td>High</td><td>Low</td><td>Low</td></tr> <tr><td>5</td><td>Low</td><td>High</td><td>Low</td><td>High</td></tr> <tr><td>6</td><td>Low</td><td>High</td><td>High</td><td>Low</td></tr> <tr><td>7</td><td>Low</td><td>High</td><td>High</td><td>High</td></tr> <tr><td>8</td><td>High</td><td>Low</td><td>Low</td><td>Low</td></tr> <tr><td>9</td><td>High</td><td>Low</td><td>Low</td><td>High</td></tr> <tr><td>A</td><td>High</td><td>Low</td><td>High</td><td>Low</td></tr> <tr><td>B</td><td>High</td><td>Low</td><td>High</td><td>High</td></tr> <tr><td>C</td><td>High</td><td>High</td><td>Low</td><td>Low</td></tr> <tr><td>D</td><td>High</td><td>High</td><td>Low</td><td>High</td></tr> <tr><td>E</td><td>High</td><td>High</td><td>High</td><td>Low</td></tr> <tr><td>F</td><td>High</td><td>High</td><td>High</td><td>High</td></tr> </tbody> </table> <p>For remote control a switch setting, set the local switch to "0" and select the wanted setting via the 4-Bit-code at the corresponding digital inputs.</p> <p>Disable Local Switches</p> <p>By forcing Input Bit "Disable Local Switch Control" (Pin C24) to "High", the LIA is set to exclusively remote control operation and the manual switches are out of function.</p> <p>Sensitivity Switch - Corresponding Inputs</p> <table border="1"> <thead> <tr> <th>Bit</th> <th>Corresponding Control Port Input</th> </tr> </thead> <tbody> <tr><td>Bit 0</td><td>SEN0 (Pin A22)</td></tr> <tr><td>Bit 1</td><td>SEN1 (Pin C21)</td></tr> <tr><td>Bit 2</td><td>SEN2 (Pin A21)</td></tr> <tr><td>Bit 3</td><td>DYNO (Pin C22)</td></tr> </tbody> </table> <p>Time Constant Switch - Corresponding Inputs</p> <table border="1"> <thead> <tr> <th>Bit</th> <th>Corresponding Control Port Input</th> </tr> </thead> <tbody> <tr><td>Bit 0</td><td>TC0 (Pin C19)</td></tr> <tr><td>Bit 1</td><td>TC1 (Pin A19)</td></tr> <tr><td>Bit 2</td><td>TC2 (Pin C20)</td></tr> <tr><td>Bit 3</td><td>TCSL (Pin A20)</td></tr> </tbody> </table> <p>Phase Switch Coarse - Corresponding Inputs</p> <table border="1"> <thead> <tr> <th>Bit</th> <th>Corresponding Control Port Input</th> </tr> </thead> <tbody> <tr><td>Bit 0</td><td>PH4 (Pin A26)</td></tr> <tr><td>Bit 1</td><td>PH5 (Pin C26)</td></tr> <tr><td>Bit 2</td><td>PH6 (Pin A25)</td></tr> <tr><td>Bit 3</td><td>PH7 (Pin C25)</td></tr> </tbody> </table> <p>Phase Switch Fine - Corresponding Inputs</p> <table border="1"> <thead> <tr> <th>Bit</th> <th>Corresponding Control Port Input</th> </tr> </thead> <tbody> <tr><td>Bit 0</td><td>PH0 (Pin A28)</td></tr> <tr><td>Bit 1</td><td>PH1 (Pin C28)</td></tr> <tr><td>Bit 2</td><td>PH2 (Pin A27)</td></tr> <tr><td>Bit 3</td><td>PH3 (Pin C27)</td></tr> </tbody> </table>	Switch Code	MSB Bit 3	Bit 2	Bit 1	LSB Bit 0	0	Low	Low	Low	Low	1	Low	Low	Low	High	2	Low	Low	High	Low	3	Low	Low	High	High	4	Low	High	Low	Low	5	Low	High	Low	High	6	Low	High	High	Low	7	Low	High	High	High	8	High	Low	Low	Low	9	High	Low	Low	High	A	High	Low	High	Low	B	High	Low	High	High	C	High	High	Low	Low	D	High	High	Low	High	E	High	High	High	Low	F	High	High	High	High	Bit	Corresponding Control Port Input	Bit 0	SEN0 (Pin A22)	Bit 1	SEN1 (Pin C21)	Bit 2	SEN2 (Pin A21)	Bit 3	DYNO (Pin C22)	Bit	Corresponding Control Port Input	Bit 0	TC0 (Pin C19)	Bit 1	TC1 (Pin A19)	Bit 2	TC2 (Pin C20)	Bit 3	TCSL (Pin A20)	Bit	Corresponding Control Port Input	Bit 0	PH4 (Pin A26)	Bit 1	PH5 (Pin C26)	Bit 2	PH6 (Pin A25)	Bit 3	PH7 (Pin C25)	Bit	Corresponding Control Port Input	Bit 0	PH0 (Pin A28)	Bit 1	PH1 (Pin C28)	Bit 2	PH2 (Pin A27)	Bit 3	PH3 (Pin C27)
Switch Code	MSB Bit 3	Bit 2	Bit 1	LSB Bit 0																																																																																																																										
0	Low	Low	Low	Low																																																																																																																										
1	Low	Low	Low	High																																																																																																																										
2	Low	Low	High	Low																																																																																																																										
3	Low	Low	High	High																																																																																																																										
4	Low	High	Low	Low																																																																																																																										
5	Low	High	Low	High																																																																																																																										
6	Low	High	High	Low																																																																																																																										
7	Low	High	High	High																																																																																																																										
8	High	Low	Low	Low																																																																																																																										
9	High	Low	Low	High																																																																																																																										
A	High	Low	High	Low																																																																																																																										
B	High	Low	High	High																																																																																																																										
C	High	High	Low	Low																																																																																																																										
D	High	High	Low	High																																																																																																																										
E	High	High	High	Low																																																																																																																										
F	High	High	High	High																																																																																																																										
Bit	Corresponding Control Port Input																																																																																																																													
Bit 0	SEN0 (Pin A22)																																																																																																																													
Bit 1	SEN1 (Pin C21)																																																																																																																													
Bit 2	SEN2 (Pin A21)																																																																																																																													
Bit 3	DYNO (Pin C22)																																																																																																																													
Bit	Corresponding Control Port Input																																																																																																																													
Bit 0	TC0 (Pin C19)																																																																																																																													
Bit 1	TC1 (Pin A19)																																																																																																																													
Bit 2	TC2 (Pin C20)																																																																																																																													
Bit 3	TCSL (Pin A20)																																																																																																																													
Bit	Corresponding Control Port Input																																																																																																																													
Bit 0	PH4 (Pin A26)																																																																																																																													
Bit 1	PH5 (Pin C26)																																																																																																																													
Bit 2	PH6 (Pin A25)																																																																																																																													
Bit 3	PH7 (Pin C25)																																																																																																																													
Bit	Corresponding Control Port Input																																																																																																																													
Bit 0	PH0 (Pin A28)																																																																																																																													
Bit 1	PH1 (Pin C28)																																																																																																																													
Bit 2	PH2 (Pin A27)																																																																																																																													
Bit 3	PH3 (Pin C27)																																																																																																																													

Single-Board Lock-In-Amplifier

Remote Control Example

For example, to select a switch setting code "6", you have to connect a "High"- level signal to the corresponding control input pins Bit 1 & Bit 2. Mixed operation, e.g. local phase settings and remote controlled sensitivity setting, is also possible when "Disable Local Switch Control" (Pin C24) is not active ("Low" or just not connected).

Dimensions



**Single-Board
Lock-In-Amplifier**

Optional Extensions	<p>Mounting Kit</p> <p>Reference Oscillator Module</p>	<p>Model No.: MK-LIA-2 - 19" – Frontpanel, printed - EMI – shielding Board-Backplane</p> <p>Model No.: SOM-1 - Frequency Range 5 Hz ... 130 kHz, User adjustable - Output Voltage 0 ... 2 Vrms, User adjustable - 100 ppm/K Amplitude Accuracy</p>

FEMTO Messtechnik GmbH
 Paul-Lincke-Ufer 34
 D-10999 Berlin · Germany
 Tel.: +49 (0)30 – 4 46 93 86
 Fax: +49 (0)30 – 4 46 93 88
 e-mail: info@femto.de
 http://www.femto.de

Specifications are subject to change without notice. Information furnished herein is believed to be accurate and reliable. However, no responsibility is assumed by FEMTO Messtechnik GmbH for its use, nor for any infringement of patents or other rights granted by implication or otherwise under any patent rights of FEMTO Messtechnik GmbH. Product names mentioned may also be trademarks used here for identification purposes only.
 © by FEMTO Messtechnik GmbH
 Printed in Germany